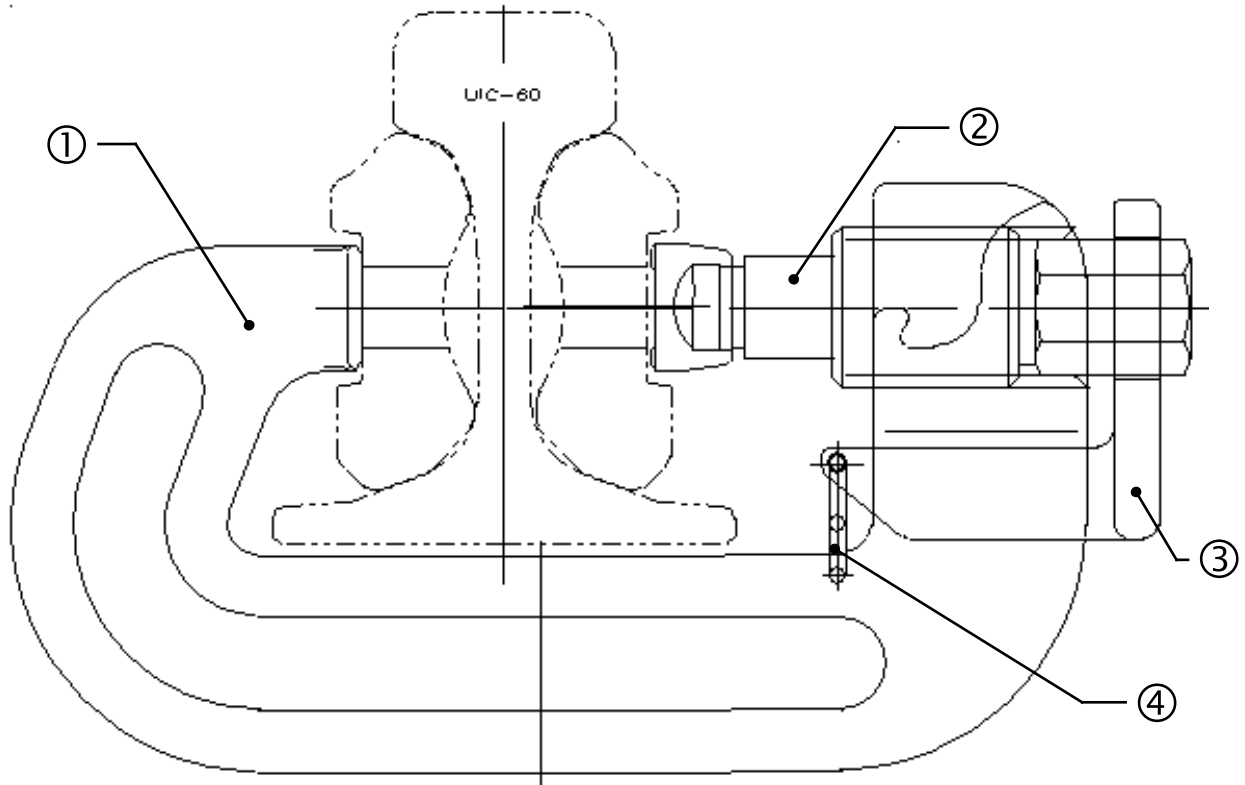


Clamp for UIC 60, according to DB drawing log 45.3012
 (spare parts for older versions on request)



Approved by Deutsche Bahn for up to 160km/h.
Universally suitable for a large variety of rails,
 i.e. UIC60, UIC54, S54, S49, SBB IV, AREA136RE etc.

Pos.	item	For orders:	
		up to 99 pcs.	over 100 pcs.
①	complete clamp, incl. ②, ③, ④ (12,2 kg)	153.60 €	147.45 €
Spare parts:			
②	Spindle Tr 52 x 4 x 174 mm, with head ready mounted	27.60 €	27.00 €
③	Spindle lock, new design	18.80 €	18.45 €
④	safety pin	1.35 €	1.10 €

All Prices in € ex Works Plettenberg, excluding packing and VAT,

issue 25.07.2022