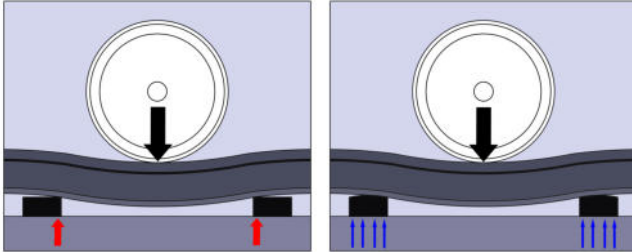


Tangential Bearing for optimal load distribution



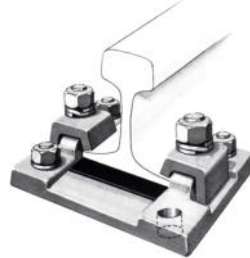
Straight bearing causes load tips on edges

Tangential bearing for even load introduction

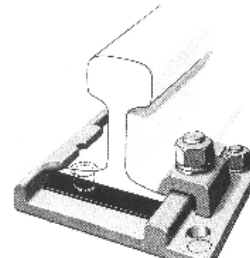
With straight baseplates (see left), even light bending of rail makes the load induction concentrate on the edges. The resulting load peak damages the concrete soon. Water penetrates the foundation and frost will destroy it even further.

With tangential bearings (see right), the ribbed plate has a convex supporting surface, designed to protect the substructure. It provides a steady load induction even under heavy axle loads. The complete area of the bearing is used to introduce loads. Heavy lateral forces can be transmitted steady, the substructure is protected longstanding.

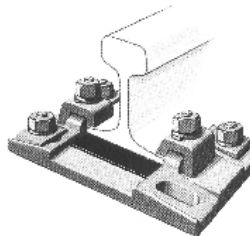
Individual solutions for your project



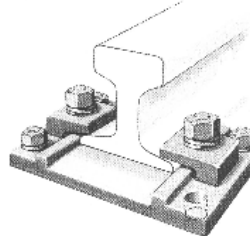
UIC60 with Rp 20 275L



S49 with HRp 175 240L



S49 with Rp 22 320 LV



MRS125 with Rp28 36L

We have the optimal solution for each fastening task:

For crane rails, as well as vignol rails. For large and small rails...

...hook ribbed plates i.e. for maintenance pits, adjustable ribbed plates i.e. for measuring tracks...

... on concrete, on steel, on sleepers.

Challenge us!

Your Contact:



Hagen F. Lothes GmbH

Auf dem Stahl 10 · 58840 Plettenberg
 Telephone +49-2391-1685
 Fax +49-2391-14432

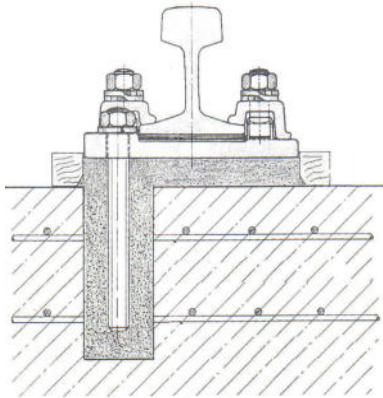
www.hfl.de
info@hfl.de

Dipl. Ing. Katharina Esser:
 management and sales

Dipl. Ing. Frank Esser:
 management and design

Mrs. Stacy Fotis:
 Back office and logistics

**Mounting:
simple, safe, accurate**

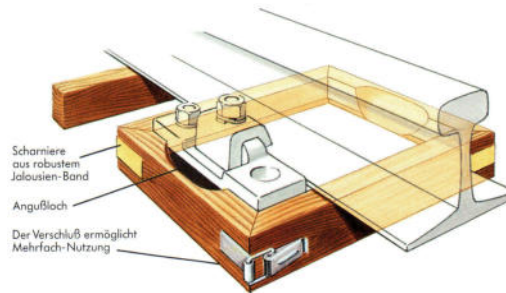


Bolt the Fastening under the rail. Mark the bores and drill.

Now align the rail precisely, then grout the ancor bolts and the plates with low shrinking grout of your choice to the foundation.

Simple mounting for best results.

**Helpful:
The System Lothes
formwork frame:**

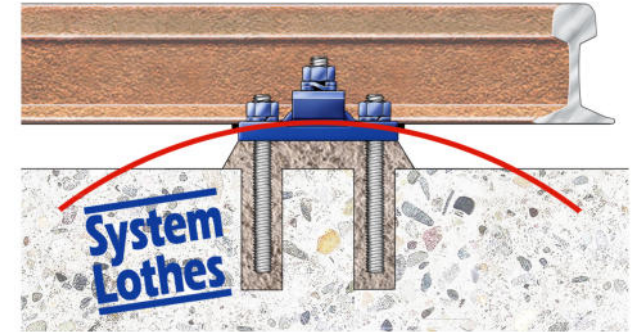


The System Lothes formwork frame assists mounting and increases the fastenings quality.

Wasteful measuring and cutting of formwork can be avoided. The System Lothes formwork frame is mounted within a few seconds.

The grout is flush with the plate. Water can not rest on any overhang and cannot cause frost damages.

The formwork frame is reusable.



**Optimally
mounted on
concrete**

**Tangential bearings
provide optimal load
distribution and protect
the substructure**

For all kind of rails